



OUTDOOR lightbars

LED light strips have gained popularity over the past years. They presented challenges to architects, landscapers, designers and all the trades' people who have worked to install them. Illuminati designed a new LED lighting system - LED lightbars that eliminate the practical problems related to LED light strip mounting and create endless design opportunities for the outdoors.

X-LUME LED fixtures and profiles are aimed to light and illuminate various areas in residential and commercial applications, such as: floors, pools and spas, outdoor kitchens, driveways, trees in the garden, communication routes, etc.

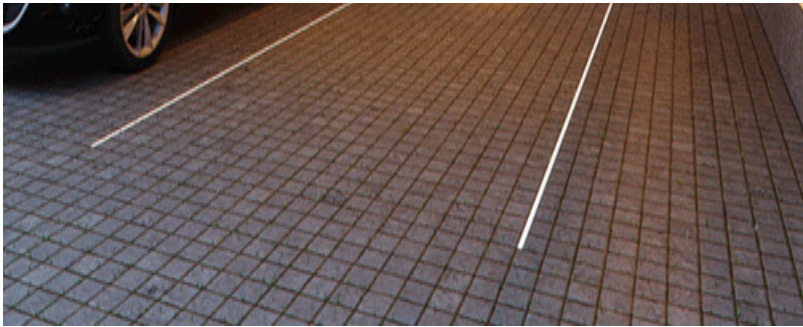
LED lightbars can be used to create outdoor lamps, outdoor furniture with integrated lighting, stair illumination, etc. LEDs can be applied everywhere where light is needed.

Illuminati's lightbars are sleek and streamlined, presenting a clean and modern look. Their many shapes and sizes make them suitable for a countless variety of residential and commercial applications. Both the professional designer and the creative homeowner are comfortable experimenting with this product to achieve stylish results. Outdoors, LED lightbars systems can be used to illuminate garden statuary or water features. They can create a romantic ambiance in the conversation area of the patio or brighten a play area for the children. LED lightbars are found in hotels and restaurants, bars and shopping malls. There is no opportunity too large or too small for this adaptable lighting system.

**Outdoor LED
Aluminum Channel**

LED OUTDOOR LIGHTBARS

The design choices are endless. Choice of light color sets the mood, from a comfortable warm white to a rocking red. The LED lightbars provide stable mounting for the LED ribbon lights. They can be mounted almost anywhere as they are compact and can be cut to fit any desired spaces inside or outdoors. Using LED extrusions really maximizes opportunities to take advantages of all the features of LED strip lights.





IL-XTRU-3579: 39.4 IN. ALUMINUM LED LIGHTBAR FOR OUTDOOR APPLICATIONS

SPECIFICATIONS

The XTRU-3579 LED Profiles are an innovative way to create your own light fixtures with LED ThinGlow Light. Suitable for surface mounting or recessed installation, these high quality profiles provide a unique way to make use of linear low voltage lighting and are the designer's choice for creating light fixtures for commercial and residential LED strip lighting.

The XTRU-3579 Aluminum Mounting Channel is used to hold LED tape light and allows you to create your own custom LED low voltage lighting scheme.

Please note: These profiles are only compatible with LED strip light 0.5 inches wide or smaller. They are compatible with ThinGlow Standard, High Output, and RGB tape lights.

PROFILE	LENGTH	SURFACE FINISHING	ITEM NUMBER
	1m/ 3.28ft (standard) 2m/ 6.56ft (standard)	Anodized	IL-XTRU-3579
	1m/ 3.28ft Cover 2m/ 6.56ft Cover	Frosted 96% or Transparent, more rigid, perfectly flat	1316
	Endcap Endcap with hole	Endcap PCV Endcap PCV with hole	1383 1445 (Hole)
	1240mm (48.81inch) L x 30mm (1.18inch) W x 10-100 (.4inch - 3.94inch) H	Base Foam	1466

Controllers and Power Supplies sold separately.





IL-XTRU-1888: 78.75 IN. ALUMINUM LED LIGHTBAR FOR OUTDOOR APPLICATIONS

SPECIFICATIONS

The XTRU-1888 LED Profiles are an innovative way to create your own light fixtures with LED Tape Light. Suitable for surface mounting or recessed installation, these high quality profiles provide a unique way to make use of linear low voltage lighting and are the designer's choice for creating light fixtures for commercial and residential LED strip lighting.

The XTRU-1888 Aluminum Mounting Channel is used to hold LED tape light and allows you to create your own custom LED low voltage lighting scheme.

Please note: These profiles are only compatible with LED strip light 0.5 inches wide or smaller. They are compatible with ThinGlow Standard, High Output, and RGB tape lights.

PROFILE	LENGTH	SURFACE FINISHING	ITEM NUMBER
	1m / 3.28ft (standard) 2m / 6.56ft (standard)	Anodized	IL-XTRU-1888
	1m 3.28ft Cover	70% Transparent (Frosted), more rigid, perfectly flat	1547
	2m 6.56ft Cover	96% Transparent, more rigid, perfectly flat	1548
	1m 3.28ft Cover	70% Transparent (Frosted), more rigid, perfectly flat	1369
	2m 6.56ft Cover	96% Transparent, more rigid, perfectly flat	1370
	1m 3.28ft Cover 2m 6.56ft Cover	96% Transparent, more rigid, perfectly flat	00220
	Mounting brackets	Zinc or Chrome	1072(Zinc) 1345 (Chrome)
	End Caps	Endcap PCV Endcap PCV with hole Electricity conductive end cap	1058 1050 1443

Controllers and Power Supplies sold separately.



WATERPROOF SPLITTER REF. 42703

voltage: 12 V or 24 V
For round wire Ø4mm-10mm

Visual Aquatics waterproof boxes are designed for easy connecting and branching of power cables, giving the waterproof connections.

They come in two types:

Waterproof Splitter - connects three cables to allow for their branching

Waterproof Coupler – connects two cables. It allows for making power connections, e.g. supplying power to light fixtures

Waterproof Splitters and Waterproof Couplers are designed for two-wire cables with insulation of circular cross section of outer diameters from 4 mm to 10 mm.

If the above are applied, you can lead power cables with voltage 12 and 24V, for example, for the illumination of gardens, facades, landscaping, swimming pools, skating rinks, sports facilities, exhibition facilities, etc. Installation, using the waterproof splitters waterproof couplers and suitable cables, can be performed in the ground, lawn, under the passageways, etc. Waterproofness of boxes and coupler is ensured by their special design. You can further secure the cable connections from moisture by filling the splitters or couplers with silicone paste after the cables have been assembled.

Connections and branching of the power cables through Visual Aquatics waterproof boxes do not require any special tools. Only simple commonly used tools are required.

